

**YOUR VISION  
OUR MACHINES**



## SPINDLE MOULDER

Elite 30SM

AMUZMA®



### **Precision Engineering. Built for Professionals.**

The Spindle Moulder Elite 30SM is a high-performance machine with a durable cast iron bed, ensuring precise cuts and long-lasting reliability. Perfect for shaping, profiling, and joinery on hardwoods and composites, it delivers exceptional value for serious craftsmen."

## SPECIFICATIONS

Spindle diameter	30 (32:35:40:50) mm
Spindle speeds	1400/3500/6000/8000 RPM
Max. spindle stroke	140 mm
Spindle length	130 mm
Spindle tilting	-5°+45°
Max. diameter of table opening	220 mm
Max. tool diameter above the table	200/250 mm
Height of table	890 mm
Max. height of machine	1300 mm
Table size	1000 x 350 mm
Suction dust hood diameter	100 mm
Motor	
<input checked="" type="checkbox"/> 3*400V	4 kW S6
<input type="checkbox"/> 1*230V	3 kW S6
Net/Gross Weight	235/280 kg
Package Size	1150 x 900 x 1085 mm
Dimensions ( H x L x W )	1300 x 1000 x 1400mm

Standard Equipment     Optional Equipment

## ACCESSORIES



Spindle Tilt Handwheel and Angle Scale



Sliding Table End with Pull Handle

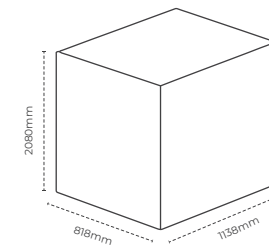
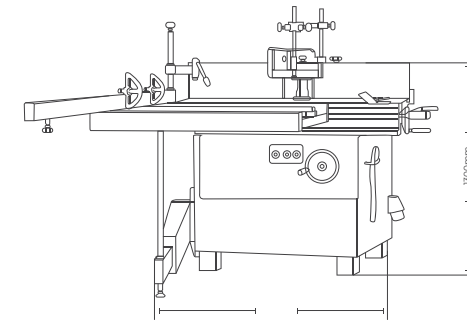
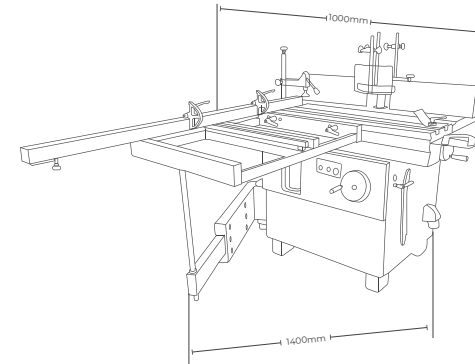


Moulder Fence Hood with Dust Extraction Port



Spindle Height Handwheel and Main Control Panel

## DIMENSIONS




## Contact Us

 +971 45478088

 +971 50 857 6840

 [info@amuzmamachinery.com](mailto:info@amuzmamachinery.com)

 [www.amuzmamachinery.com](http://www.amuzmamachinery.com)

 Ras Al Khor, Industrial Area 2,  
United Arab Emirates



Website



Contact Us